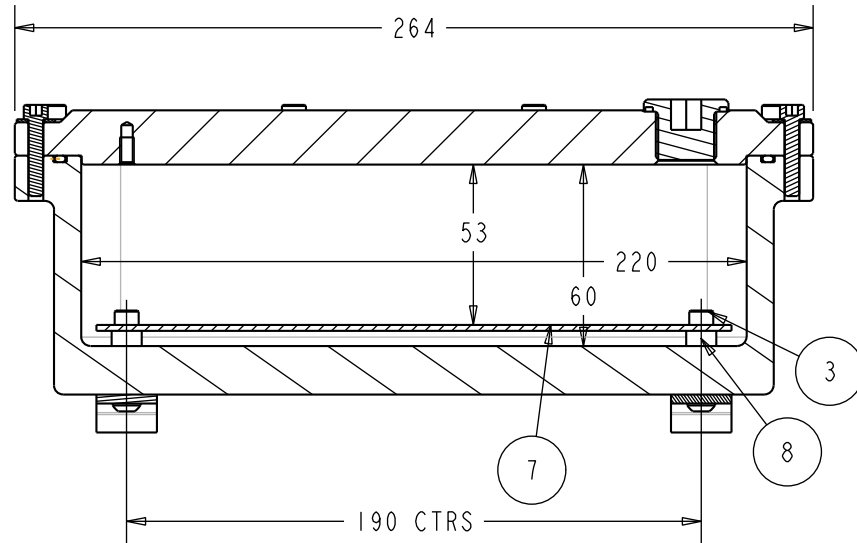
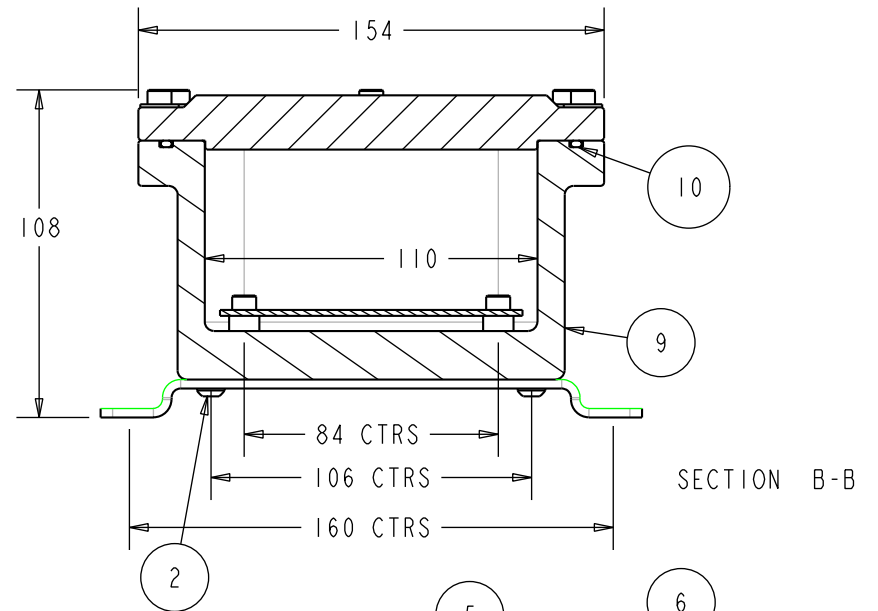


3RD ANGLE

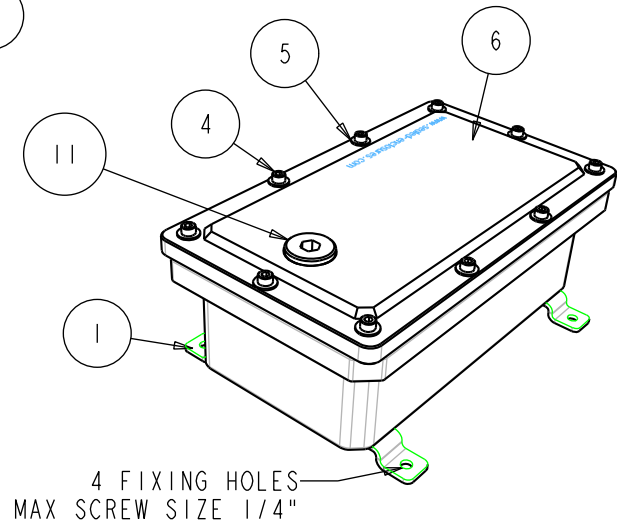
©2013 THE INFORMATION CONTAINED WITHIN THIS DRAWING IS THE COPYRIGHT OF MECHANICAL DESIGNS LTD PTY AND MAY NOT BE USED WITHOUT PRIOR CONSENT



SECTION A-A
SCALE 0.400



SECTION B-B



OTHER MATERIALS AVAILABLE ON REQUEST

ITEM	DESCRIPTION	MATERIAL	QTY
1	BRIDGE FOOT	316 S/STEEL	2
2	SCREW;BTN HD;#10-32X1/2;S.S.	316 S/STEEL	4
3	SCREW;SOC.CAP;#10-32X1/2;S.S.	316 S/STEEL	4
4	SCREW;SOC.CAP;#10-32X1;S.S.	316 S/STEEL	10
5	WASHER 3/16" X 1/2" X 20G	316 S/STEEL	10
6	BOX LID	5083 ALUMINIUM	1
7	SUB PLATE	# ALUMINIUM 6082-T6	1
8	PILLAR	ACETAL	4
9	BOX BODY	ALUMINIUM 5083	1
10	O SEAL 3.0 SECTION 220 I.D.	NITRILE	1
11	BLANKING PLUG M20 X 1.5	ST/STEEL 316S33	1

Sealed Enclosures
 www.sealed-enclosures.com
 FACTORY 4, 43-47 RIVERSIDE AVENUE WERRIBEE VICTORIA 3030 AUSTRALIA
 Tel +61 (0)3 8742-3525 Fax +61 (0)3 9923-6497

TITLE ALUMINIUM FOX BOX
 RATING 400 METRES

PROJECT STANDARD PRODUCT
 NOTES MACHINED FROM SOLID

WEIGHT 4 KG
 UNITS mm

DRAWING NO 4004
 DRAWN BY E Bowes

ISSUE 1
 CHECKED BY A B

ISSUE DATE 15th March 2005

SHEET 1 OF 1